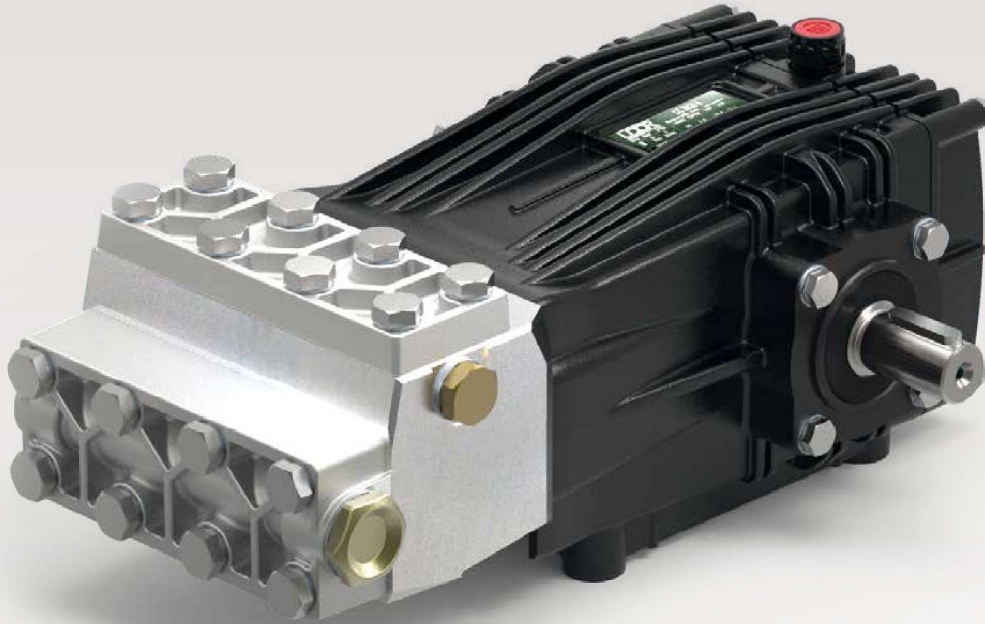


CH



| RPM | CODICE CODE | MODELLO MODEL | PORTATA FLOW | | PRESSIONE PRESSURE | | POTENZA POWER | | PESO WEIGHT | |
|------|-------------|---------------|--------------|-----|--------------------|------|---------------|------|-------------|---|
| | | | l/min | GPM | bar | PSI | HP | kW | | |
| 1450 | 291000 | CHC 12/50 S | 12.0 | 3.2 | 500 | 7250 | 15.4 | 11.5 | 22.1 | S - Albero MASCHIO 24 mm DX S - MALE Shaft 24 mm R |
| | 290200 | CHC 16/50 S | 16.0 | 4.2 | 500 | 7250 | 20.5 | 15.3 | 22.1 | |
| | 291300 | CHC 20/50 S | 20.0 | 5.3 | 500 | 7250 | 25.6 | 19.1 | 22.1 | |
| 1750 | 291200 | CHD 3,0/75 S | 11.5 | 3.0 | 500 | 7250 | 14.7 | 11.0 | 22.1 | S - Albero MASCHIO 24 mm DX S - MALE Shaft 24 mm R |
| | 290400 | CHD 4,5/75 S | 16.0 | 4.2 | 500 | 7250 | 20.5 | 15.3 | 22.1 | |

Tutti i modelli di Pompe sono disponibili con Presa di Forza Sinistra. Nella descrizione compare "L"

All models of PUMPS are available with Left P.T.O. Shaft. Descriptions mention "L"

Dimensioni d'ingombro (mm) - Overall Dimensions (mm)

