

- ✓ Slide or dual bearing systems
- ✓ Stainless steel
- ✓ Maintenance free

## Application

Ceiling boom, high pressure hose reels, high pressure cleaner

### TECHNICAL DATA

**Pressure** 275 bar (27.5 MPa)  
**Temperature** 120°C  
**RPM** see chart (max. RPM)

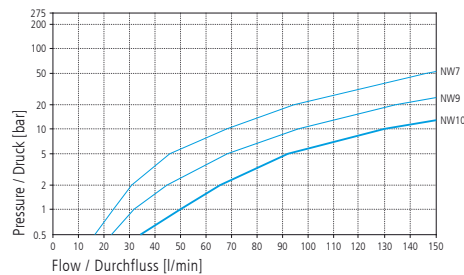
**Body** brass, nickel plated  
 WDBIV: stainless steel

**Inner part Seal** stainless steel  
 O-ring

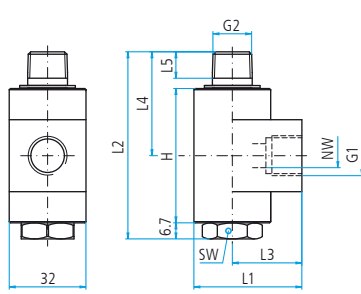
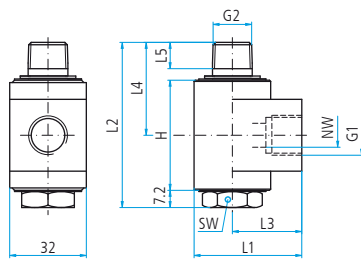
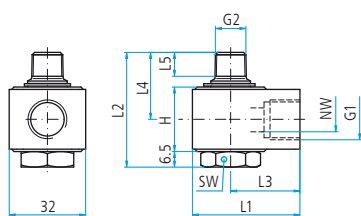
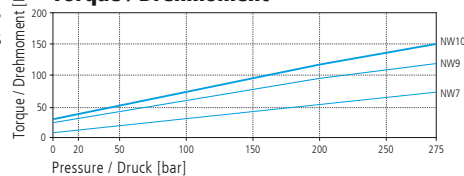
**Bearing** WDB/WDBIV: sliding bearing  
 WDBL: 2x radial ball bearings  
 WDBS: 2x radial ball bearings

**Throughput medium** pH 3 - 12  
 10 µm filtered  
 20 bar compressed air

### Flow / Durchfluss



### Torque / Drehmoment



### WDB

Part No.	G1 (F)	G2 (M)	NW	H	L1	L2	L3	L4	L5	SW	max. RPM	Weight
43.201	G1/4" F	G1/4" kM	7	27	45	48	29	28	10	22	30	280g
43.202	G3/8" F	G3/8" kM	9	27	45	49	29	29	11	22	30	260g
43.209*	G1/4" F	G1/4" M	7	27	45	45	29	25	11	22	30	270g

### WDBIV

Part No.	G1 (F)	G2 (M)	NW	H	L1	L2	L3	L4	L5	SW	max. RPM	Weight
43.208*	G1/4" F	G1/4" M	7	27	45	45	29	25	11	22	30	270g

\* without snap ring, for Mosmatic ceiling boom

### WDBL (with radial ball bearings)

Part No.	G1 (F)	G2 (M)	NW	H	L1	L2	L3	L4	L5	SW	max. RPM	Weight
43.212	G3/8" F	G3/8" kM	10	46	45	69	29	39	11	22	200	440g

### WDBS (with radial ball bearings and protection plate)

Part No.	G1 (F)	G2 (M)	NW	H	L1	L2	L3	L4	L5	SW	max. RPM	Weight
43.222	G3/8" F	G3/8" kM	10	56	45	78	29	44	11	22	200	520g

43.904	Seal kit
--------	----------

Legend

M.. = metric thrust, ..M = male, F = female, G = gas pipe thrust, QV = quick connects, SV = profile ring fitting  
 D = diameter, k = conical, L = length, NW = nominal width, SW = wrench size